



High Performance High Speed Grade - Coloured Blue - Rated up to speeds of **170 mph**. Suitable for cars, light commercial vehicles, motorhomes, motorcycles, touring caravans and trailers. Seals punctures caused by puncturing objects up to **6mm** in diameter, but in the event that the puncturing object has caused excessive tyre damage, PunctureSafe will obstruct escaping air, causing the tyre to deflate in a slow controlled way allowing the driver to remove the vehicle from a potentially dangerous location.



Heavy Duty Medium Speed Grade - Coloured Magenta - Rated up to speeds of **90 mph**. Suitable for heavy goods vehicles, mining trucks, coaches and buses. Reduces costly downtime for fleet operators. Seals punctures caused by puncturing objects up to **15mm** in diameter, but in the event that the puncturing object has caused severe tyre damage, PunctureSafe will obstruct escaping air causing the tyre to deflate in a slow controlled way, allowing the driver to remove the vehicle from a potentially dangerous location.



Extra Heavy Duty Low Speed Grade - Coloured Emerald Green - Rated up to speeds of **50 mph**. Suitable for agricultural and construction vehicles, heavy plant and machinery, quad bikes, ride on mowers and golf buggies etc. Reduces costly downtime for fleet operators. Seals punctures caused by puncturing objects up to **9mm** in golf buggies, quad bikes etc, **20mm** in tractors, farm trailers, fork lifts etc and **30mm** in very large tyres with good tread on large tractors, mining vehicles etc. (The heavy duty nature of this grade will not allow you to install into high speed vehicles with steering)



Cycle Grade - Coloured Orange - Suitable for all types of cycles with Schrader valves. Seals punctures caused by puncturing objects up to **3mm** in diameter. (It is not possible to apply PunctureSafe through the narrow Presta valves)



UNDER PRESSURE DON'T BE TO HELP AVOID THIS



SEALS PUNCTURES "AS THEY HAPPEN"

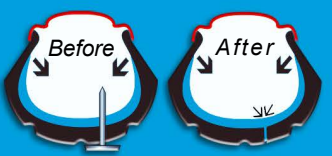


A PUNCTURE PREVENTION TREATMENT THAT IS APPLIED "BEFORE THE PUNCTURE OCCURS" THAT EVENLY COVERS THE INNER TYRE AND SEALS PUNCTURES "AS THEY HAPPEN"
A REVOLUTIONARY UNIQUE PRODUCT

A PunctureSafe seal is permanent for the life of the tyre. Most tyre sealants will seal punctures in the liquid state, but the problems usually occur when the liquid dries hard and inflexible in the puncture, due to heat generated through contact with the road surface, and at this stage air can escape, eventually causing a flat tyre. PunctureSafe dries to a flexible rubbery plug without shrinkage in the puncture, giving a permanent seal. This is unique to PunctureSafe.

The installation procedure is quick & simple taking just a few minutes without removing the wheel from the vehicle, or deflating the tyre and with very little air loss, using our calibrated hand pump with installation quantity charts.

PunctureSafe's coating and sealing abilities is exceptional. If a sealant only covers the middle of the tread area in a road going vehicle at speed, it is only doing half a job.



Your local Retailer/Installer

PunctureSafe UK
Queensgate House
48 Queen Street, Exeter, Devon, EX4 3SR
www.puncturesafe.com

The content of this information leaflet is the copyright property of PunctureSafe UK, and as such any copying in part or in full is expressly forbidden

PunctureSafe covers more of the inner tyre at speed. When a puncture occurs, the centrifugal forces of the rotating tyre, plus internal pressure and escaping air, forces the PunctureSafe gel into the puncture and a permanent seal is created.

Benefits & Cost Savings of using PunctureSafe in Commercial Vehicles and Machines

Extra Heavy Duty Grade for Off Road Vehicles

- Depending on the strength of the tyre construction, the sealant is capable of sealing punctures caused by puncturing objects up to **30mm** across heavier ply tyres - more than "double" any other sealant on the market. Between **9mm** and **20mm** for smaller tyres.
- Originally developed for the military, this is the strongest & most reliable tyre sealant ever produced to cope with the harshest of environments and manufactured with the most advanced technology ever developed.

We use technology not found in other tyre sealants

- There is a growing worldwide problem for users of heavy industrial tyres, caused by higher material costs, which has forced tyre manufacturers to reduce production of these more specialised large tyres (ie earthmover tyres) which now adds considerably more waiting time for supply. PunctureSafe is the solution to this problem.



Heavy Duty Grade for On/Off Road HGVs

- Seals punctures caused by puncturing objects up to **15mm**, but only punctures that are safe to seal. Alternatively the gel will reduce rapid air loss in a slow and controlled manner, allowing the HGV to move from a potentially dangerous location, or slowly return to base depending on circumstances.
- Provides protection from hazardous environments on sites such as land-fill, construction, quarrying, mining, recycling and agricultural. ● Prevents costly penalties for late deliveries and services.

The installed product offers big cost savings in reduced punctures and blowouts, but for the operator of HGVs other benefits of using PunctureSafe, such as Maintained Tyre Pressure can produce additional cost savings:

- **Maintained Tyre Pressure** helps reduce excessive heat caused by heavy loads on under-inflated tyres - Cool tyres are harder to puncture and also do not wear out as fast. Excellent inner tyre coverage aids in removing heat via conduction to the wheel rim.
- **Maintained Tyre Pressure** helps reduce vehicle tyre drag and rolling resistance which reduces fuel costs.
- **Maintained Tyre Pressure** helps extend tyre life by as much as 20%. ● Eliminates porosity, air migration and bead leaks.
- **Maintained Tyre Pressure** helps improve safety. ● Will not hide or mask a dangerous puncture.
- Fully compatible with all re-treading methods and major repairs. ● The treatment will last for the life of the tyre.
- Water soluble, so easily cleans out of the tyre with normal tap pressure. ● Will not void tyre manufacturers warranty.
- **Big cost savings on punctures, blow-outs, fuel, downtime and no early tyre replacement.**

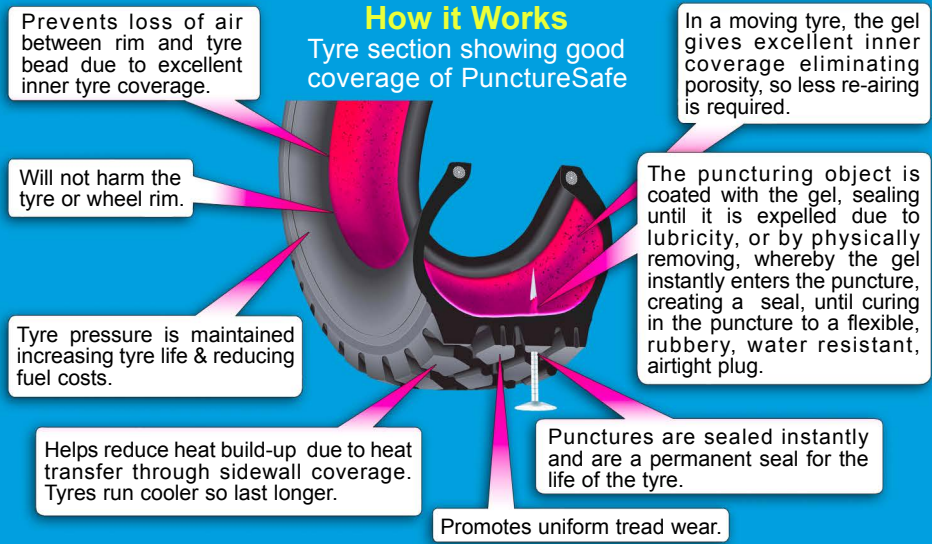
The cost of treating 4 tyres, which lasts for the life of the tyre, is considerably less than the cost of a conventional repair, yet one treatment is capable of preventing as many as 100 punctures per tyre!

The maths is staggering, as many of our long term users have discovered!



How it Works

Tyre section showing good coverage of PunctureSafe



Contains FlexxaGel™ our most closely guarded trade secret

Combined Benefits of Both Grades

- Punctures that are securely sealed will be permanent for the life of the tyre.
- Both of these extra strength commercial grades have been designed to reduce 95%+ of punctures. (99% in the high performance, high speed grade)
- Seals punctures "As they Happen" on site, in a working vehicle, without disruption or expensive downtime, and idle labour costs, or the need to wait for a tyre repair or replacement. **Significant reduction in operational costs.**
- Prevents the instance of damage normally caused by running on a flat tyre. A puncture sealed by PunctureSafe before the tyre goes flat is incredibly less expensive in the long term than repairing a flat tyre with run-flat damage that will eventually fail prematurely.
- We are confident that our unrivalled technology is superior to any other and as such our tyre sealants are now fully integrated into all good tyre management programmes by many large companies - **because it works!**
- The result of many years of Research and Development with substantial investment, to bring this "Unique Puncture Prevention Treatment" to market.
- Does not contain lethal Ethylene Glycol normally found in tyre sealants as antifreeze. Contains Eco-friendly antifreeze.

